

EASYPPOINT[®]

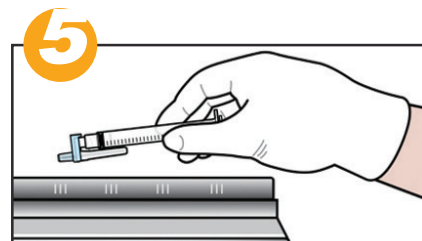
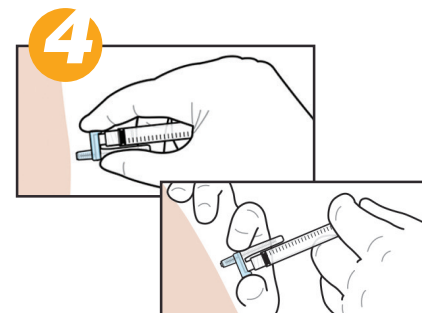
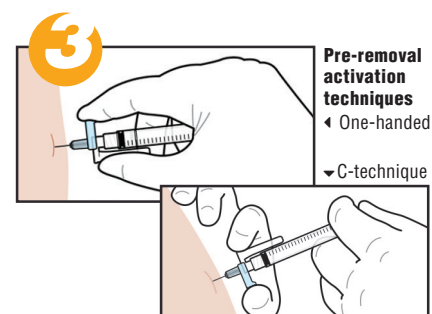
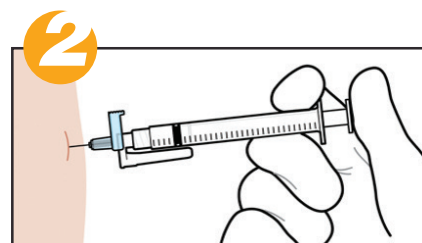
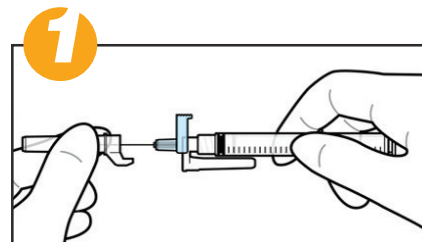
retractable needle

PRODUCT USAGE INFORMATION

- 1** Using aseptic technique, open package and securely attach the EasyPoint needle to a syringe. Carefully remove needle cap. Do not apply pressure to the color-coded tab during needle cap removal. Once needle cap has been removed, do not apply pressure to the color-coded tab until needle retraction is desired.
- 2** According to institutional policy, select and prepare the injection/aspiration site and prepare and administer medication using aseptic technique.
- 3** Upon completion of medication administration, apply pressure to the color-coded tab and the safety chamber using a squeezing motion. **Do not push the color-coded tab upward.** This device is designed for activation before or after removing the needle from the patient. Pre-removal activation minimizes exposure to the contaminated needle and reduces the risk of needlestick injuries. Activation can be achieved in a variety of ways.
- 4** When pressure is applied to the color-coded tab and the safety chamber using a squeezing motion, the safety chamber and syringe will slide toward the color-coded tab, allowing the needle to automatically retract into the safety chamber. In the event that the needle retraction mechanism does not activate, discard the needle in an appropriate sharps container per protocol of institution. Do not recap contaminated needles.
- 5** Dispose of the used needle and syringe in an appropriate sharps container per protocol of institution.

Precautions

Single use only. Reuse of this device may result in exposure to bloodborne pathogens, including Hepatitis B virus (HBV), Hepatitis C virus (HCV), and human immunodeficiency virus (HIV). Do not use if product or package is damaged. Not made with natural rubber latex. Not made with DEHP. Not made with PVC. No known contraindicated prescribed medicinal fluids. Activation of the retraction mechanism after withdrawing needle may cause minimal splatter. U.S. Federal Law restricts this device to sale by or on the order of a physician.



M099 REV.7 EN, FEB 2023



511 Lobo Lane, Little Elm, Texas 75068-5295
Tel: (972) 294-1770 Fax: (972) 294-4400
Toll Free 1-888-703-1010

rtisales@retractable.com

