

EASYPPOINT® Blood Collection Tube Holder With Needle

Automated Retraction Technology



STERILE EO
STERILIZED BY
ETHYLENE OXIDE

2
SINGLE USE

Rx
Only

DD-CL2603, Rev. B

Indications for Use:

- The EasyPoint® Blood Collection Tube Holder With Needle is intended for use with evacuated blood collection tubes for venous blood collection, while aiding in the prevention of needlestick injuries and contaminated needle exposure.

Description:

- The EasyPoint® Blood Collection Tube Holder With Needle allows for multiple sample draws from a single venipuncture for diagnostic purposes, while minimizing exposure to the contaminated needle and reducing the risk of needlestick injuries.
- Upon activation, the needle is automatically retracted into the safety chamber.

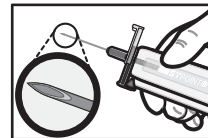
Precautions:

- Single use only. Reuse of this device may result in exposure to bloodborne pathogens including Hepatitis B virus (HBV), Hepatitis C virus (HCV), and human immunodeficiency virus (HIV).
- Contents are sterile, non-toxic, and non-pyrogenic. Do not use if product or individual package is damaged.
- Not made with natural rubber latex.
- Not made with DEHP.
- Not made with PVC.
- Use with commercially available evacuated blood collection tubes.
- Activation of the retraction mechanism after withdrawing needle may cause minimal splatter.
- U.S. Federal law restricts this device to sale by or on the order of a physician.

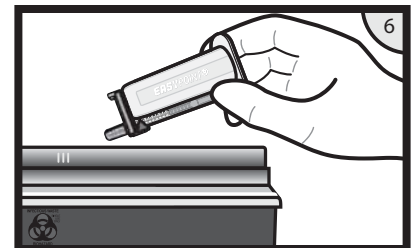
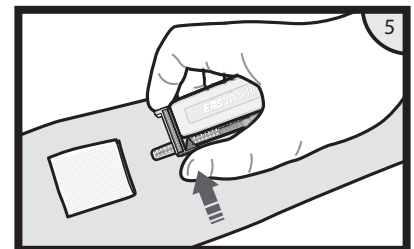
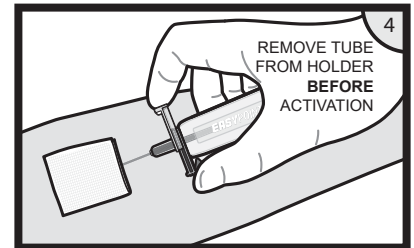
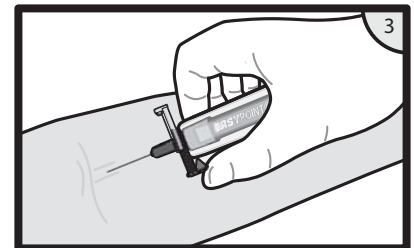
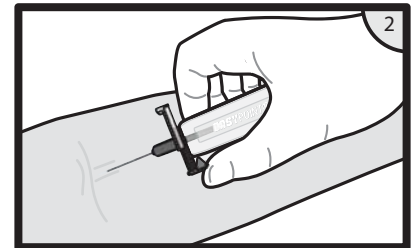
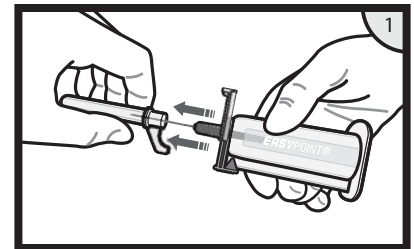
Instructions for Use:

- Select and prepare venipuncture site using aseptic technique according to institutional policy.
- Open the package using the designated peel-apart tabs.
- Needle is attached. No assembly is required.

1. Carefully remove needle cover by pulling the cover straight off (*do not twist*) when ready to use. The needle bevel is positioned for venipuncture when EASYPPOINT® (printed on the tube holder) is facing up.
2. Perform venipuncture per protocol of institution.
3. Insert blood collection tube into the tube holder, pushing forward to start blood flow. Remove blood collection tube when filled and repeat with additional tubes as required. Avoid pressure to the clear tab during blood collection.
4. Remove the last tube from holder when blood collection is complete. Activate the retraction mechanism using a **squeezing motion** to slide the color-coded finger tab toward the clear tab until the needle retracts. *Do not push the clear tab upward.* Activation of the retraction mechanism while the needle is still in the patient's vein minimizes exposure to the contaminated needle and reduces the risk of needlestick injuries.
5. When activated, the needle will automatically retract into the safety chamber, preventing exposure to the contaminated needle and rendering the tube holder non-reusable. In the event that the needle retraction mechanism does not activate, discard tube holder in an appropriate sharps container per protocol of institution. Do not recap contaminated needles.
6. Dispose of tube holder in an appropriate sharps container per protocol of institution.



Bevel Orientation



Corporate Headquarters
Retractable Technologies, Inc.
511 Lobo Lane
Little Elm, Texas 75068-0009
www.retractable.com

Manufacturing Location
Jumin Bio-Technologies Co., Ltd.
1888 Huhang Road, Jianghai Economic Zone
Fengxian, Shanghai
P. R. China

Sales and Marketing
Retractable Technologies, Inc.
511 Lobo Lane, P.O. Box 9
Little Elm, Texas 75068-0009
Fax: (972) 294-4400
Toll Free 1-888-703-1010

PATENTS--WWW.RETRACTABLE.COM/PATENTS

© 2022. Retractable Technologies, Inc. All rights reserved.